



902 Hwy 246, Sabetha, KS 66534

1-800-530-5624

Bolt-On Manual Override Valve Control Installation Manual

This guide will assist you in the installation of the manual override valve control and the momentary safety switch which is typically used if you have a wireless or pendant valve control system.

As a precautionary measure, disconnect the negative battery terminal from the battery prior to installing the valve control and switch.

NEVER allow children or unauthorized personnel access to the controls for your valve control.

ALWAYS use sound judgement and common sense when operating your *HydraBed*.

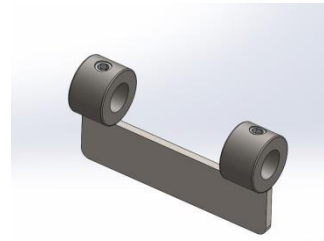
This kit contains the following:

Part No.	Item	Quantity	
OP-KSOR-3X00 RETRO OP-KSOR-3X50 RETRO	Bolt-On Manual override bracket	1 each	
HD-MO-SPRING PLUNGER	Spring plungers	2 each	
HD-MO-SPRING	Manual override springs	2 each	

FP-MO-CNTR TAB

Centering tab

1 each



FP-MO-PIVOTROD
HB3X00 or HB3x50

Manual override pivot rod

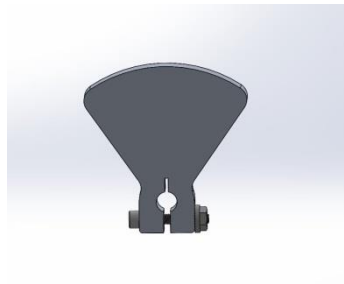
1 each



FP-MO-HANDLE

Manual override handle

1 each



BO-3/8x1
BO-3/8 HN

Bolt 3/8x1
3/8 Hex Nyloc Nut

2 each




MO-SWITCH

Manual override
momentary switch

1 each



EL-BC423005	Heat shrink butt connectors	2 each	
EL-RT552105	Ring terminals	2 each	
EL-W62185	18 AWG 2 conductor cable	7 feet	
LB-MO-PUSHPULL	Manual override operation decal	1 each	
LB-MO-PRESS&HOLD	Momentary switch decal	1 each	
LB-MO-REMOVE	Manual override handle decal	1 each	

1. Install the spring plungers, with the plunger facing inward, into the holes on each side of the plunger tab bracket. Leave the plungers loose to aid in the installation of the centering tab. **Figure 1.**

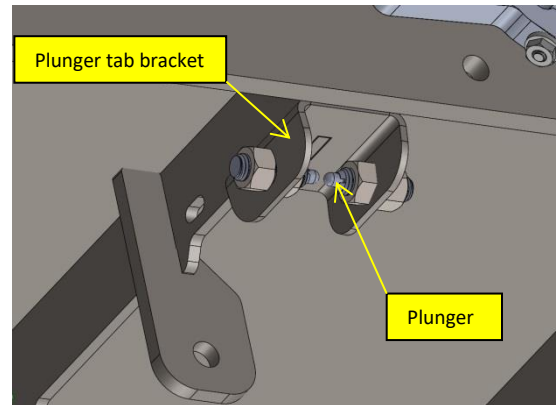


Figure 1

2. Drill (2) two $\frac{13}{32}$ " holes in the bed rail, one 12" rearward of the front of the rub rail and $\frac{3-1}{16}$ " down from the top of the floor and the other $\frac{11-3}{16}$ " rearward of the front of the rub rail and $\frac{1-1}{8}$ " down from the top of the floor. (Rub rail not shown) **Figure 2**

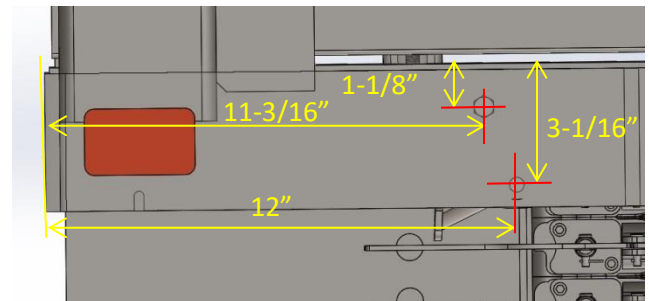


Figure 2

Move the filter hose out of the way in order to install the manual override bracket between it and the bottom of the floor. Rotate and install the bracket between the valve plate and inner rail. Line up the upper pre-drilled hole in the inner rail and the hole at the plunger tab end of the bracket and install one $\frac{3}{8}$ " bolt and $\frac{3}{8}$ " nyloc nut. Leave them loose to aid in the installation of the other bolt and nut. Line up the hole on the valve plate end of the bracket and the hole in the valve plate and install the other $\frac{3}{8}$ " bolt and nyloc nut. Tighten both nuts. **Figure 3**

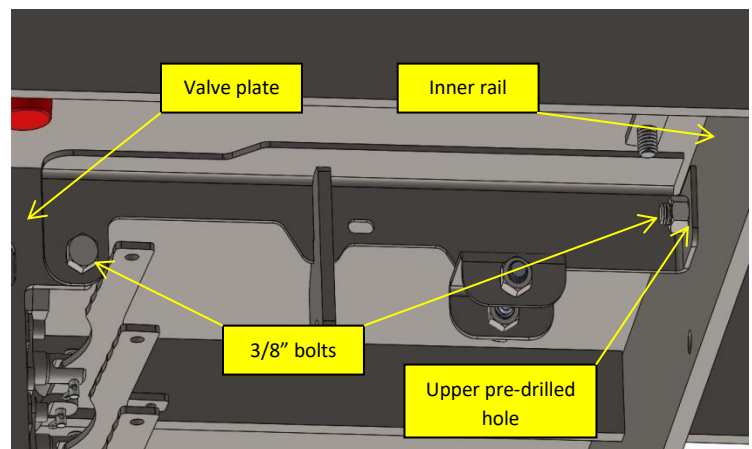


Figure 3

3. Place the pivot rod as shown on the frame of the *HydraBed* so that it can be threaded through the hole in the rod bracket. **Figure 4**



Figure 4

4. Thread the pivot rod through the hole in the rod bracket just enough to allow the installation of the springs and centering tab. Install one spring, the centering tab and then the last spring onto the pivot rod. The last spring may need to be compressed to place it in between the bed rail and the centering tab. Placement of the centering tab should be between the spring plungers as shown. **Figure 5**



Figure 5

5. Depress the top valve handle so that it will give enough clearance to allow the valve tab to be placed between the valve handles (2 spool valve) or the top and middle handles (3 spool valve), 3 spool valve shown. **Figure 6**

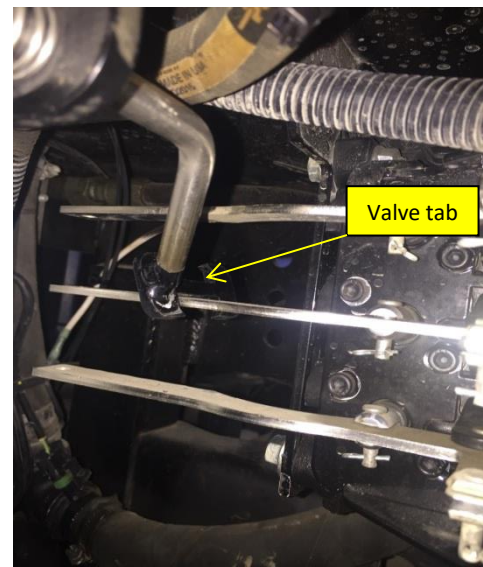


Figure 6

6. Adjust the spring plungers so that the tips of the plungers are just touching the centering tab and tighten the nuts. Center the valve tab vertically and verify that the catches on the valve tab are between the valve handles as shown (**Figure 7**) and tighten the two (2) set screws in the centering tab.

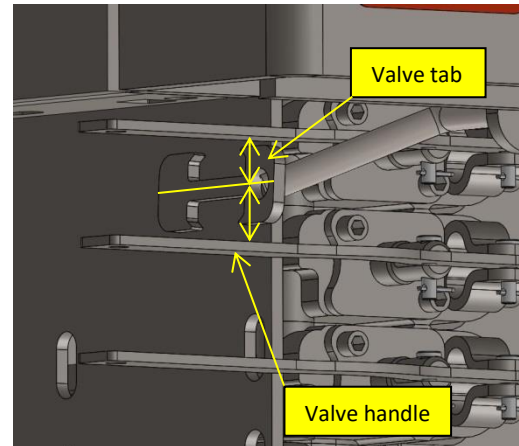


Figure 7

7. Install the manual override handle on the end of the pivot rod with the face of the handle flush with the end of the rod. Position the handle in a way that it would allow full movement for the various positions during operation and tighten the nut. **Figure 8**

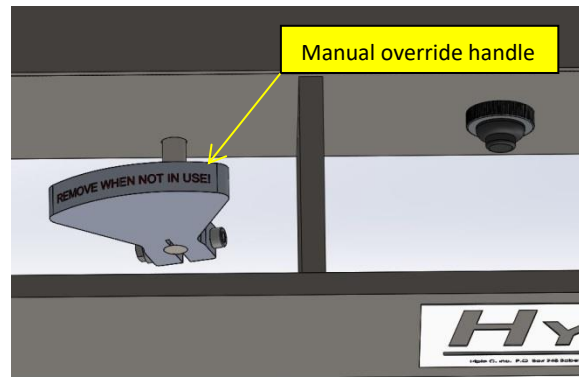


Figure 8

Momentary Switch Installation Guide

Refer to the *HydraBed Husco Valve Electric Control System* manual to locate the wireless control in the vehicle.

1. Locate the red wire on the wireless control box (12V input from relay) and splice the white wire onto the wire with a butt connector.
2. Locate the black wire on the wireless control box (engine-driven pump clutch) and splice the black wire onto the wire with a butt connector.

Note: *If your application is using an E/H pump, splice the black wire from the momentary switch to the white/black wire from the wireless control box (E/H solenoid).*

3. Route the connected wires through the harness compression bushing routing them along other wires or hoses up to the location of the momentary switch.
4. Install the ring terminals on both the black and white wires and connect to the switch. Wires can be connected to either switch terminal.
5. Locate and drill a $21/32$ " hole in the bed rail approximately 17" rearward of the front of the rub rail and 1-3/4" down from the top of the floor. Remove the rubber switch button and nut from the momentary switch and install the switch into the hole. Reinstall the nut, tighten, and then install the rubber switch button.

Figure 9

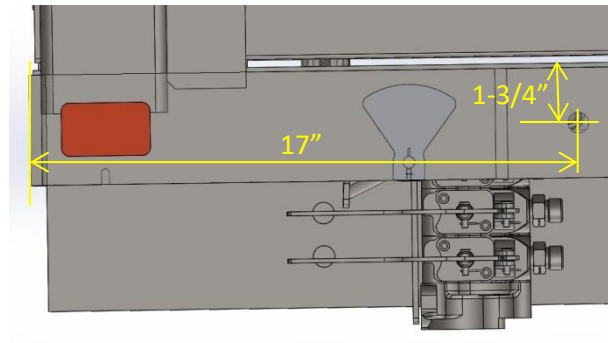


Figure 9

6. Install the included decals at the suggested locations where they can be easily viewed, near the handle and momentary switch. Install the 'REMOVE WHEN NOT IN USE!' decal across the top of the handle as shown. **Figure 10**

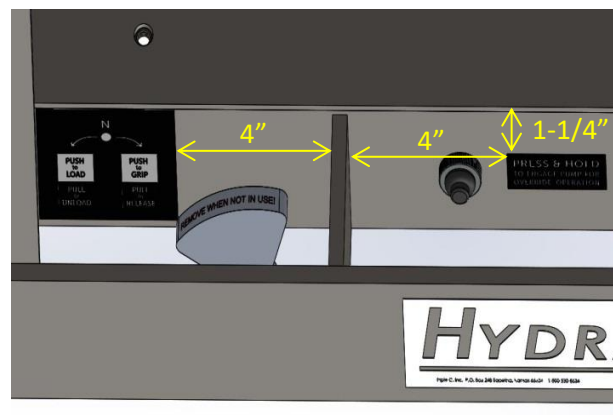


Figure 10

Manual override control can only be achieved by pressing and holding the momentary switch before operating the manual override handle.